

C515 WSHP Generic

Replacement for McQuay Mark IV controllers.

Kit contains:

- 1) Master control board P/N C515

The C515 controller is intended to replace McQuay controllers as follows

- 1) Part Numbers **056792401K** and **60638801** which use a DC reversing valve solenoid. See settings on Page 2 to select either AC or DC reversing valve solenoid. **NOTE BOARD IS SHIPPED SET UP FOR 24AC RV SOLENOID OPERATION**
- 2) Part Numbers **056792402K**, this is a direct replacement, the C515 replaces boards used since 1999.

How to replace the unit.

- 1) Turn Off the power
- 2) Remove the old board and make sure you note where all wires land. Install the new board and wire it exactly the same.
- 3) Turn the power ON

Indicator light differences between the replacement board C515 and the original Mark IV board

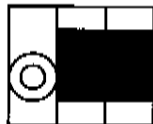
See table below.

Mode	Board status LED's						Fault output Terminal A	
	Mark IV			C515			Mark IV	C515
	Yellow	Green	Red	Yellow	Green	Red		
Occupied	OFF	ON	OFF	OFF	ON	OFF	Non-active	Non-active
Unoccupied	ON	ON	OFF	ON	ON	OFF	Non-active	Non-active
Load Shed	OFF	OFF	ON	OFF	OFF	ON	Non-active	Non-active
Condensate overflow	ON	DIM	OFF	ON	DIM	OFF	Active	Active
High/Low Pressure fault	OFF	OFF	Flash	OFF	OFF	Flash	Active	Active
Low Temperature fault	Flash	OFF	OFF	Flash	OFF	OFF	Active	Active
Brownout	OFF	Flash	OFF	OFF	Flash	OFF	Active	Active alternately
Emergency Shutdown	OFF	Flash	OFF	OFF	Flash	OFF	Active	Non-active
Power "ON"	-	-	-	Green Led at the center of the board is ON				
Y1&W1 (Energized together) on Occupied Mode	-	-	-	OFF	OFF	Flash	Non-active	Active

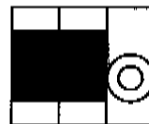
Selecting the C515 board to operate as a 24V AC coil or a 24 VDC coil.

- 1) Locate the jumper, adjacent to the COF-(condensate) terminal
- 2) See chart below for correct jumper location.
- 3) When the coil is DC note polarity RV is +24 VDC, RV-1 is -24 VDC.

Jumper in position
for 24 VAC Solenoid



Jumper in position
for 24 VDC Solenoid



There is only one
jumper assy but
it is shown in
both positions



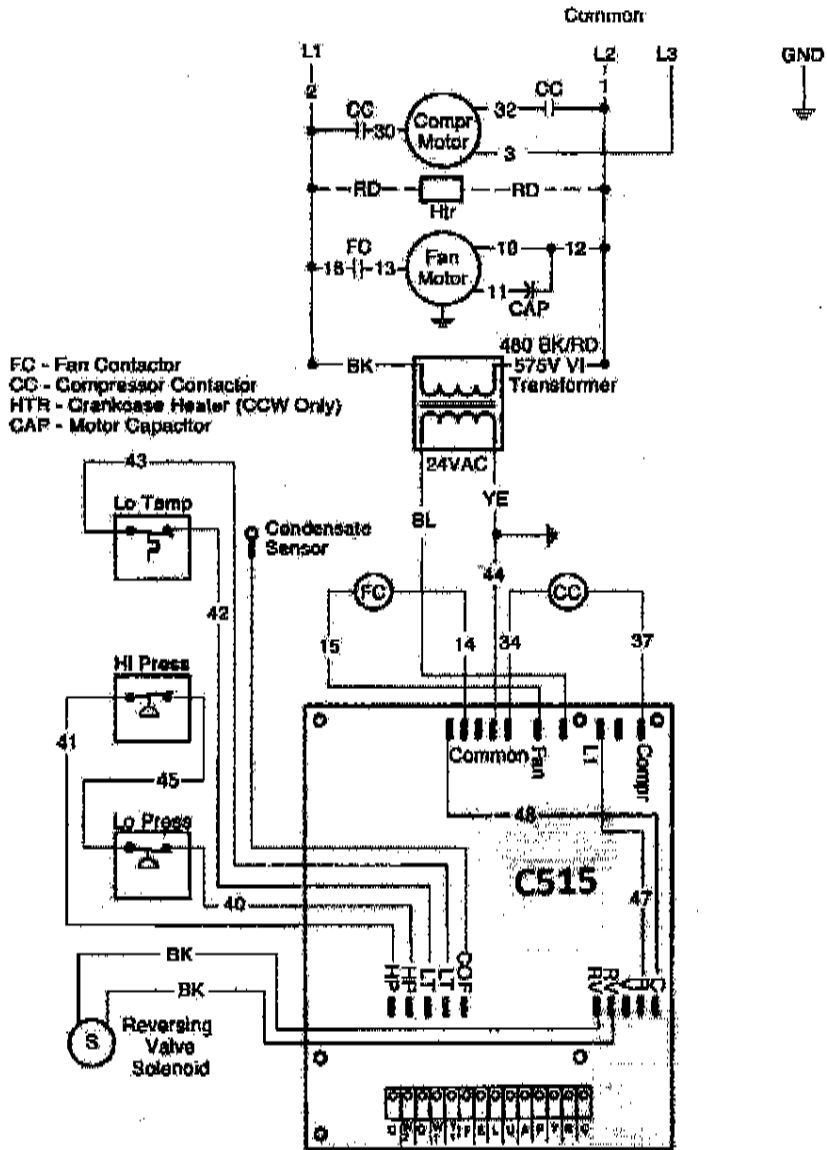
Thermostat Terminal Strip

Other minor differences in the two boards.

Fan Operation Cooling Mode, the Mark IV starts the fan and the compressor at the same time. The C515 starts the fan 30 seconds before the compressor starts and stops the fan 30 seconds after the compressor stops, this help reduce the start stop sound level.

W1(Heating) and Y1(Cooling), In the event that you get a demand for heat and cool at the same time the mark IV will always go to heat, The C515 will lockout the unit and flash the Red LED.

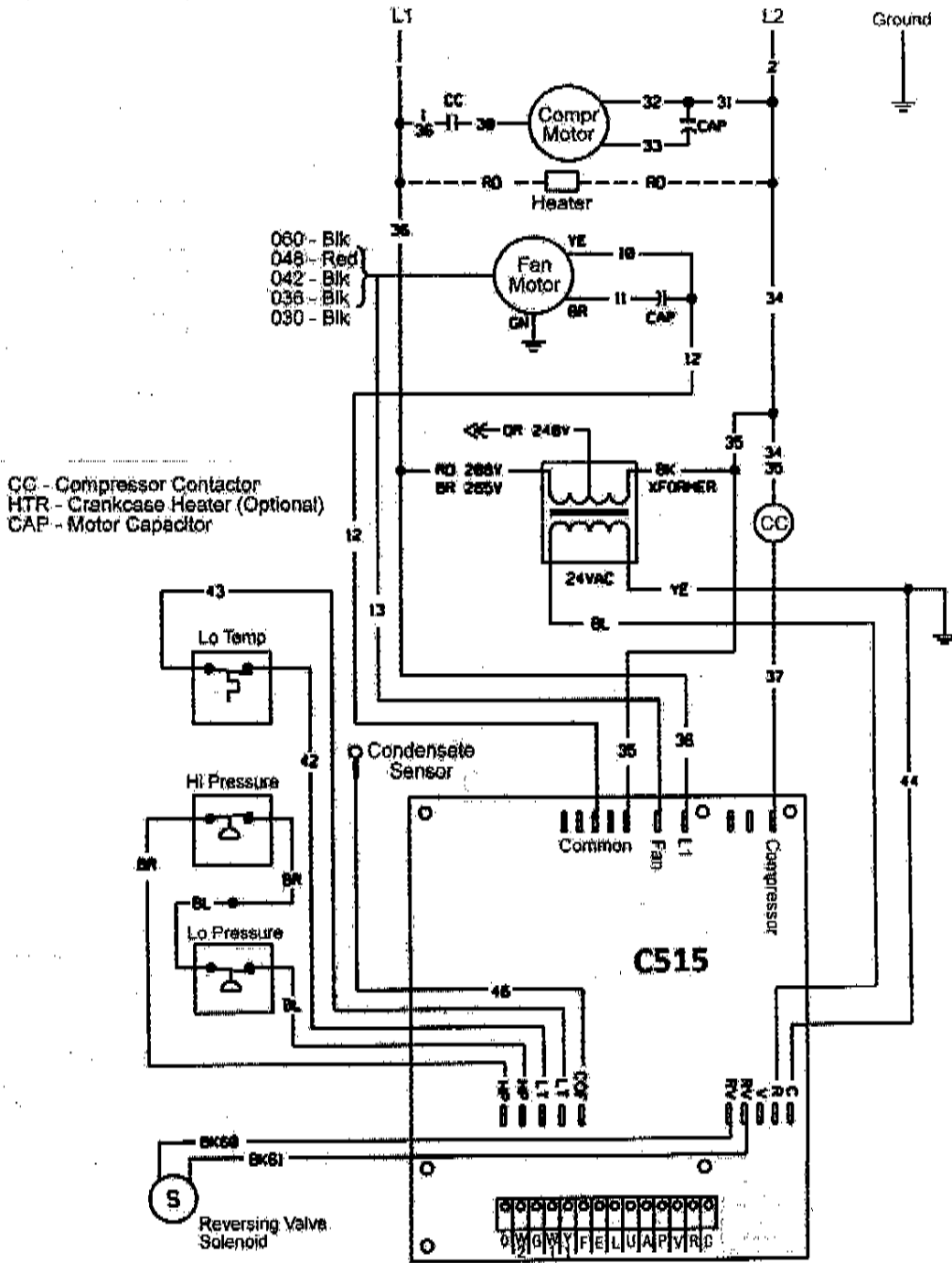
Wiring the C515 control board to a typical three phase McQuay unit.
Refer to actual wiring diagram for complete information



Seabarrl Distributing Inc. Ph. 405-819-9726

Website seabarri.com

Wiring the C515 control board to a typical single phase McQuay unit.
Refer to actual wiring diagram for complete information



CC - Compressor Contactor
 HTR - Crankcase Heater (Optional)
 CAP - Motor Capacitor

Seabarri Distributing Inc. Ph. 405-819-9726

Website seabarri.com